

APPENDIX L FARMLANDS

This appendix contains documentation of the coordination with the Natural Resource Conservation Service regarding prime or unique farmlands that may be affected by the Proposed Action in this Environmental Impact Statement.

THIS PAGE INTENTIONALLY LEFT BLANK



U.S. Department
of Transportation
**Federal Aviation
Administration**

Detroit Airports District Office
Metro Airport Center
11677 South Wayne Road, Ste. 107
Romulus, MI 48174

August 10, 2007

Ms. Mary Ann Core, District Conservationist
Natural Resource Conservation Center
Columbus Service Center
1328 Dublin Road
Columbus, OH 43215-1054

Dear Ms. Core:

Port Columbus International Airport
Franklin County – Columbus, Ohio
Farmland Conservation Impact Rating Form

The Federal Aviation Administration is conducting an Environmental Impact Statement on proposed improvements to Port Columbus International Airport. In support of this project, enclosed for your review is the Farmland Conversion Impact Rating Form AD-1006 (with Parts I and III completed) and supporting exhibits.

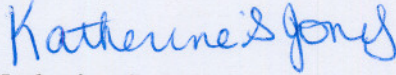
Proposed improvements include the replacement/relocation of the airport's south runway and the development of a new passenger terminal to supplement the existing passenger terminal. The Proposed Action area contains approximately 126 acres of undeveloped land located to the southwest of the existing Runway 10R/28L. The USGS quad map identifies a portion of this area as a former Air Force Plant 85. The area is not currently being used for agricultural purposes.

The replacement Runway 10R/28L with its associated parallel taxiways and the relocated Stelzer Road will require conversion of undeveloped land. The western portion of the Proposed Action area will contain the future Runway Protection Zone (RPZ) for the replacement runway. Although agriculture is an FAA approved land use within an RPZ, no farming activity is currently occurring within the RPZs at Port Columbus International Airport. The terminal alternative is located within an area that has been previously disturbed by prior development.

Please review the enclosed information and complete the parts that are the responsibility of the Natural Resource Conservation Service and send the Form AD-1006 back to Ms. Katherine S. Jones at the above address. Thank you for your time and consideration of this matter.

If you have questions, or need additional information, please contact the consultant performing this work on our behalf, Susan Zellers, Aerofinity, Inc. szellers@aerofinity.com or 317.955.8395 ext. 302.

Sincerely,

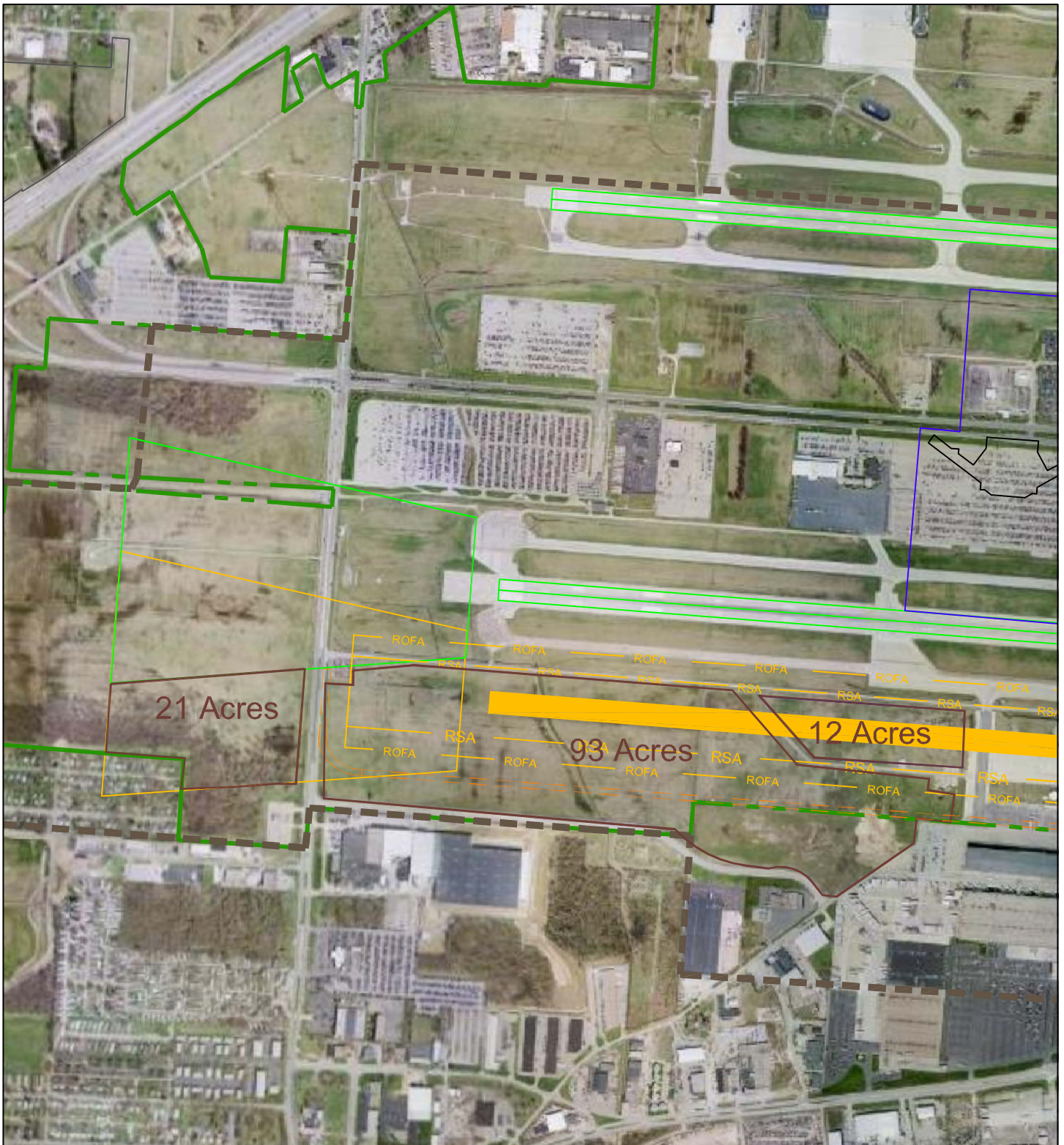


Katherine S. Jones
Community Planner

Cc: Rob Adams, L&B
Susan Zellers, Aerofinity
Dave Wall, CRAA
EIS File

FARMLAND CONVERSION IMPACT RATING

PART I (To be completed by Federal Agency)		Date Of Land Evaluation Request			
Name Of Project		Federal Agency Involved			
Proposed Land Use		County And State			
PART II (To be completed by NRCS)		Date Request Received By NRCS			
Does the site contain prime, unique, statewide or local important farmland? (If no, the FPPA does not apply -- do not complete additional parts of this form).		Yes <input type="checkbox"/>	No <input type="checkbox"/>	Acres Irrigated	Average Farm Size
Major Crop(s)	Farmable Land In Govt. Jurisdiction Acres: %			Amount Of Farmland As Defined in FPPA Acres: %	
Name Of Land Evaluation System Used	Name Of Local Site Assessment System	Date Land Evaluation Returned By NRCS			
PART III (To be completed by Federal Agency)		Alternative Site Rating			
		Site A	Site B	Site C	Site D
A. Total Acres To Be Converted Directly					
B. Total Acres To Be Converted Indirectly					
C. Total Acres In Site					
PART IV (To be completed by NRCS) Land Evaluation Information					
A. Total Acres Prime And Unique Farmland					
B. Total Acres Statewide And Local Important Farmland					
C. Percentage Of Farmland In County Or Local Govt. Unit To Be Converted					
D. Percentage Of Farmland In Govt. Jurisdiction With Same Or Higher Relative Value					
PART V (To be completed by NRCS) Land Evaluation Criterion Relative Value Of Farmland To Be Converted (Scale of 0 to 100 Points)					
PART VI (To be completed by Federal Agency) Site Assessment Criteria (These criteria are explained in 7 CFR 658.5(b))		Maximum Points			
1. Area In Nonurban Use					
2. Perimeter In Nonurban Use					
3. Percent Of Site Being Farmed					
4. Protection Provided By State And Local Government					
5. Distance From Urban Builtup Area					
6. Distance To Urban Support Services					
7. Size Of Present Farm Unit Compared To Average					
8. Creation Of Nonfarmable Farmland					
9. Availability Of Farm Support Services					
10. On-Farm Investments					
11. Effects Of Conversion On Farm Support Services					
12. Compatibility With Existing Agricultural Use					
TOTAL SITE ASSESSMENT POINTS		160			
PART VII (To be completed by Federal Agency)					
Relative Value Of Farmland (From Part V)		100			
Total Site Assessment (From Part VI above or a local site assessment)		160			
TOTAL POINTS (Total of above 2 lines)		260			
Site Selected:	Date Of Selection	Was A Local Site Assessment Used? Yes <input type="checkbox"/> No <input type="checkbox"/>			
Reason For Selection:					



Source: Aerial Base Map Google Earth, 2007

North

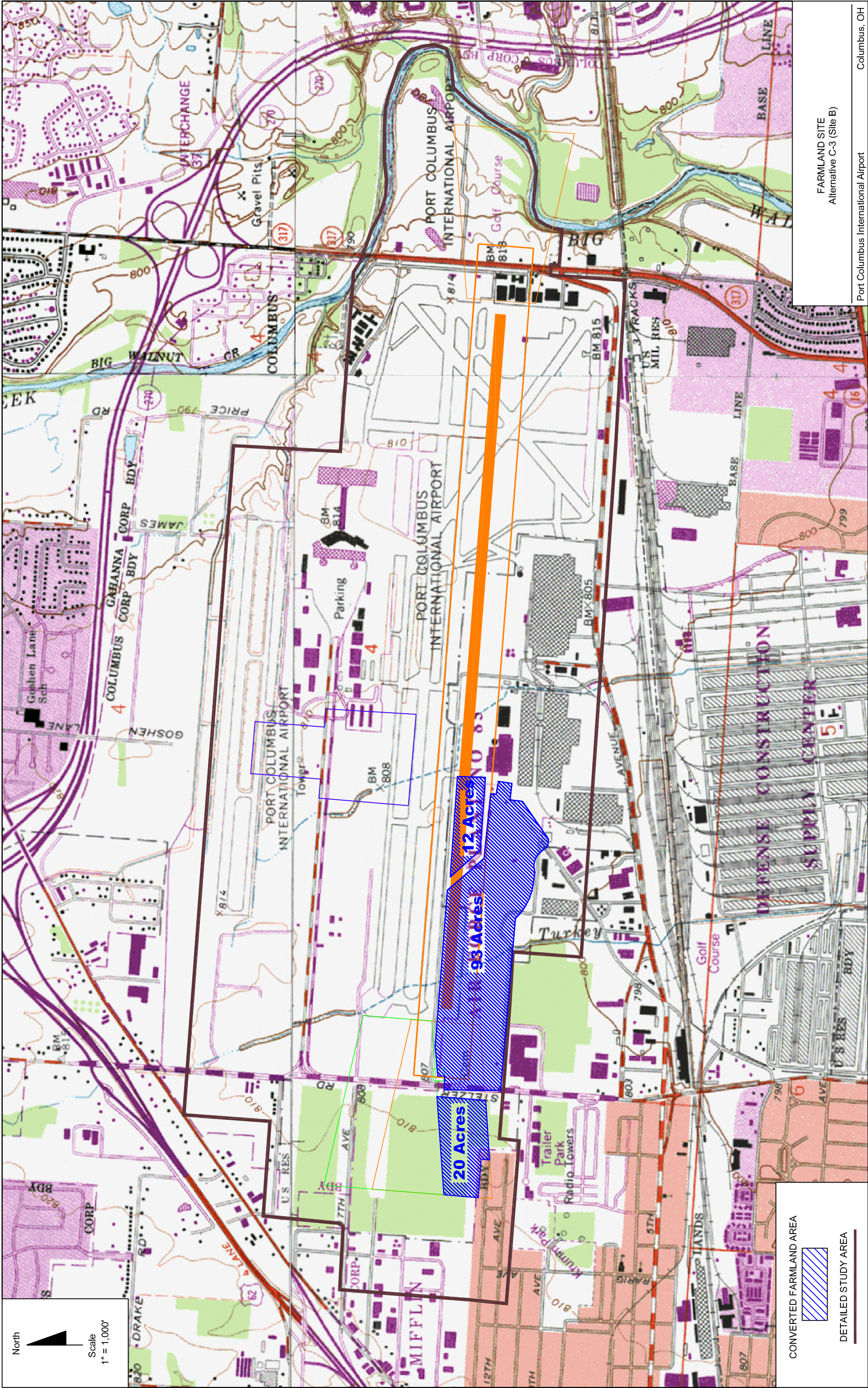
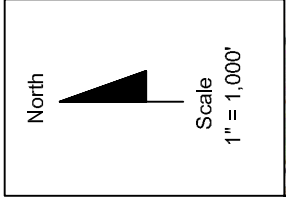
 Scale
 1" = 1,000'

--- Airport Property Line
 --- Study Area

FARMLAND IMPACT ASSESSMENT AREA Alternative C-2 (Site A)

Port Columbus International Airport

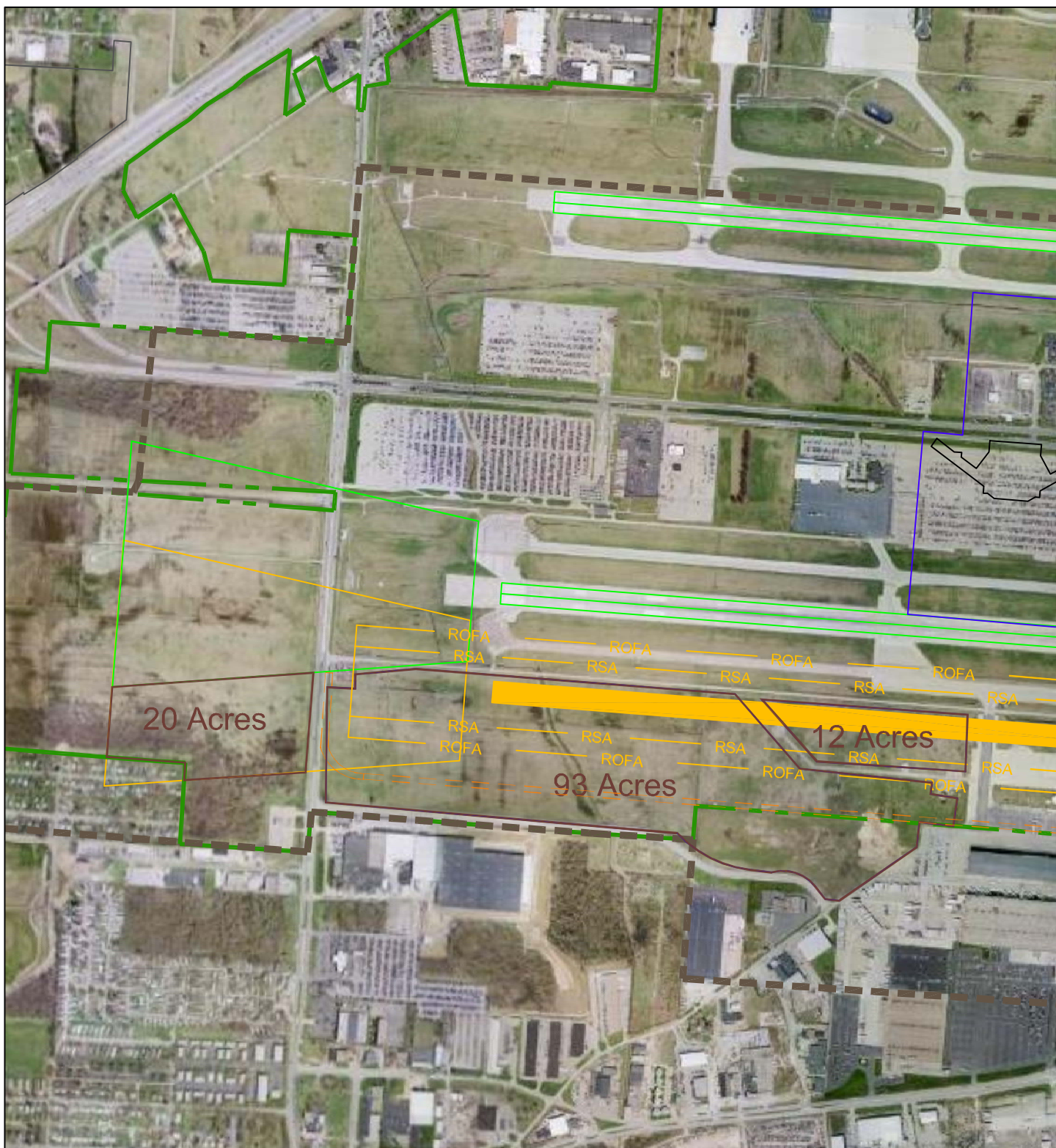
Columbus, OH



CONVERTED FARMLAND AREA

DETAILED STUDY AREA

FARMLAND SITE
Alternative C-3 (Site B)



Source: Aerial Base Map Google Earth, 2007

North



Scale
1" = 1,000'

- - - - - Airport Property Line
- - - - - Study Area

FARMLAND IMPACT ASSESSMENT AREA Alternative C-3 (Site B)

United States Department of Agriculture



Natural Resources Conservation Service
1328 Dublin Road, Suite 101
Columbus, Ohio 43215

RECEIVED

OCT - 4 2007

Phone: 614-486-9613
Fax: 614-486-9614

FAA, DETROIT ADO

September 28, 2007

Katherine S. Jones
Community Planner
Federal Aviation Administration
Detroit Airports District Office
11677 South Wayne Road, Ste. 107
Romulus, MI 48174

Dear Ms Jones:

I have reviewed your request for Port Columbus International Airport and completed the Farmland Conversion Impact Rating, Form AD-1006.

Please note that there are no Prime, Unique or Locally Important Farmland soils within the project area because the area is considered, by definition, to be urbanized.

If I can be of further assistance, please do not hesitate to contact me.

Sincerely,

Mary Ann Core
District Conservationist

Enclosure: Form AD-1006

Helping People Help the Land

An Equal Opportunity Provider and Employer

U.S. Department of Agriculture

RECEIVED

FARMLAND CONVERSION IMPACT RATING

OCT - 4 2007

PART I (To be completed by Federal Agency)		Date Of Land Evaluation Request 7/9/07		FAA, DETROIT ADO	
Name Of Project Port Columbus International Airport EIS		Federal Agency Involved Federal Aviation Administration			
Proposed Land Use Aviation Related		County And State Franklin County, Ohio			
PART II (To be completed by NRCS)		Date Request Received By NRCS 8-16-07			
Does the site contain prime, unique, statewide or local important farmland? (If no, the FPPA does not apply -- do not complete additional parts of this form).		Yes <input type="checkbox"/>	No <input checked="" type="checkbox"/>	Acres Irrigated	Average Farm Size
Major Crop(s)	Farmable Land In Govt. Jurisdiction Acres: %	Amount Of Farmland As Defined in FPPA Acres: %			
Name Of Land Evaluation System Used	Name Of Local Site Assessment System	Date Land Evaluation Returned By NRCS 9-28-07			
PART III (To be completed by Federal Agency)		Alternative Site Rating			
		Site A	Site B	Site C	Site D
A. Total Acres To Be Converted Directly		126.0	125.0		
B. Total Acres To Be Converted Indirectly		0.0	0.0		
C. Total Acres In Site		126.0	125.0	0.0	0.0
PART IV (To be completed by NRCS) Land Evaluation Information					
A. Total Acres Prime And Unique Farmland					
B. Total Acres Statewide And Local Important Farmland					
C. Percentage Of Farmland In County Or Local Govt. Unit To Be Converted					
D. Percentage Of Farmland In Govt. Jurisdiction With Same Or Higher Relative Value					
PART V (To be completed by NRCS) Land Evaluation Criterion Relative Value Of Farmland To Be Converted (Scale of 0 to 100 Points)		0	0	0	0
PART VI (To be completed by Federal Agency) Site Assessment Criteria (These criteria are explained in 7 CFR 658.5(b))		Maximum Points			
1. Area In Nonurban Use					
2. Perimeter In Nonurban Use					
3. Percent Of Site Being Farmed					
4. Protection Provided By State And Local Government					
5. Distance From Urban Builtup Area					
6. Distance To Urban Support Services					
7. Size Of Present Farm Unit Compared To Average					
8. Creation Of Nonfarmable Farmland					
9. Availability Of Farm Support Services					
10. On-Farm Investments					
11. Effects Of Conversion On Farm Support Services					
12. Compatibility With Existing Agricultural Use					
TOTAL SITE ASSESSMENT POINTS		160	0	0	0
PART VII (To be completed by Federal Agency)					
Relative Value Of Farmland (From Part V)		100	0	0	0
Total Site Assessment (From Part VI above or a local site assessment)		160	0	0	0
TOTAL POINTS (Total of above 2 lines)		260	0	0	0
Site Selected:	Date Of Selection	Was A Local Site Assessment Used? Yes <input type="checkbox"/> No <input type="checkbox"/>			
Reason For Selection:					

(See Instructions on reverse side)

This form was electronically produced by National Production Services Staff

Form AD-1006 (10-83)