

# Idaho Airport Sponsorship

Who: Counties and Cities of Twin Falls, Jerome, Gooding, & Interested Municipalities

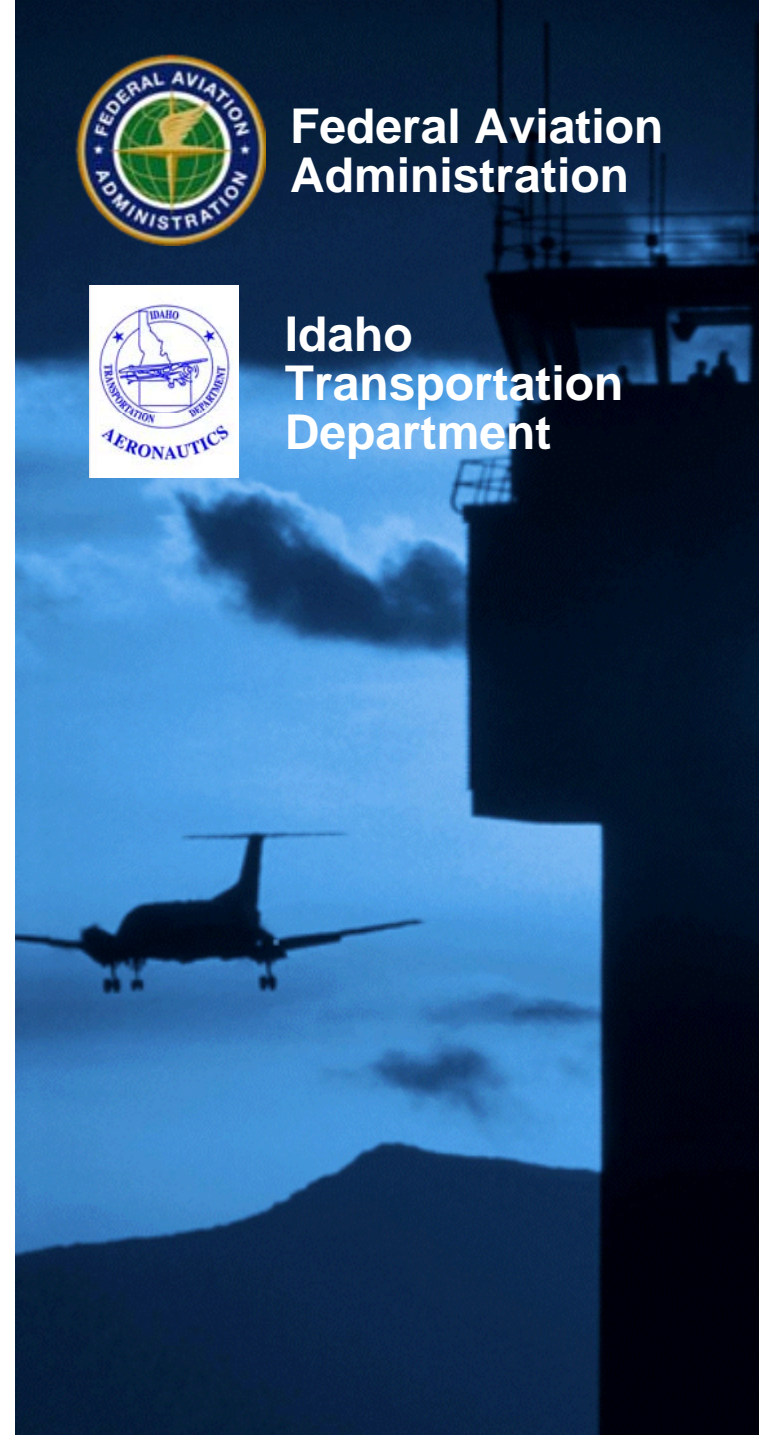
Date: February 13, 2008



Federal Aviation Administration



Idaho Transportation Department



# Idaho Airport Sponsorship

## Considerations for joint or regional sponsorship:

- Spread responsibility between multiple interested municipalities
- Provide a single point of contact
- Provide a broad base for developing, operating, and marketing an airport
- Provide a broad base for financing all airport functions
- Retain the authority to acquire and/or condemn land and to establish revenue generation mechanisms



# Idaho Airport Sponsorship

## Methods to Establish a Regional or Joint Airport

Title 21, Chapter 8, Idaho Code, Regional Airport

Creates a single airport authority based upon Counties within a Idaho Air Region

Title 21, Chapter 4, Section 21-401, “Joint Airport”

Creates a single airport authority that is a combination of interested Counties, Cities, and Highway Districts



# Idaho Airport Sponsorship

## First Steps for a Regional Airport

- The State of Idaho is divided into five air regions for purposes of development of regional airports
- The south central air region consists of:
  - Blaine County
  - Cassia County
  - Jerome County
  - Minidoka County
  - Camas County
  - Gooding County
  - Lincoln County
  - Twin Falls County
- A petition signed by not less than 25 electors from each legislative district within the 8 county region is required to establish an interim Board of Trustees.



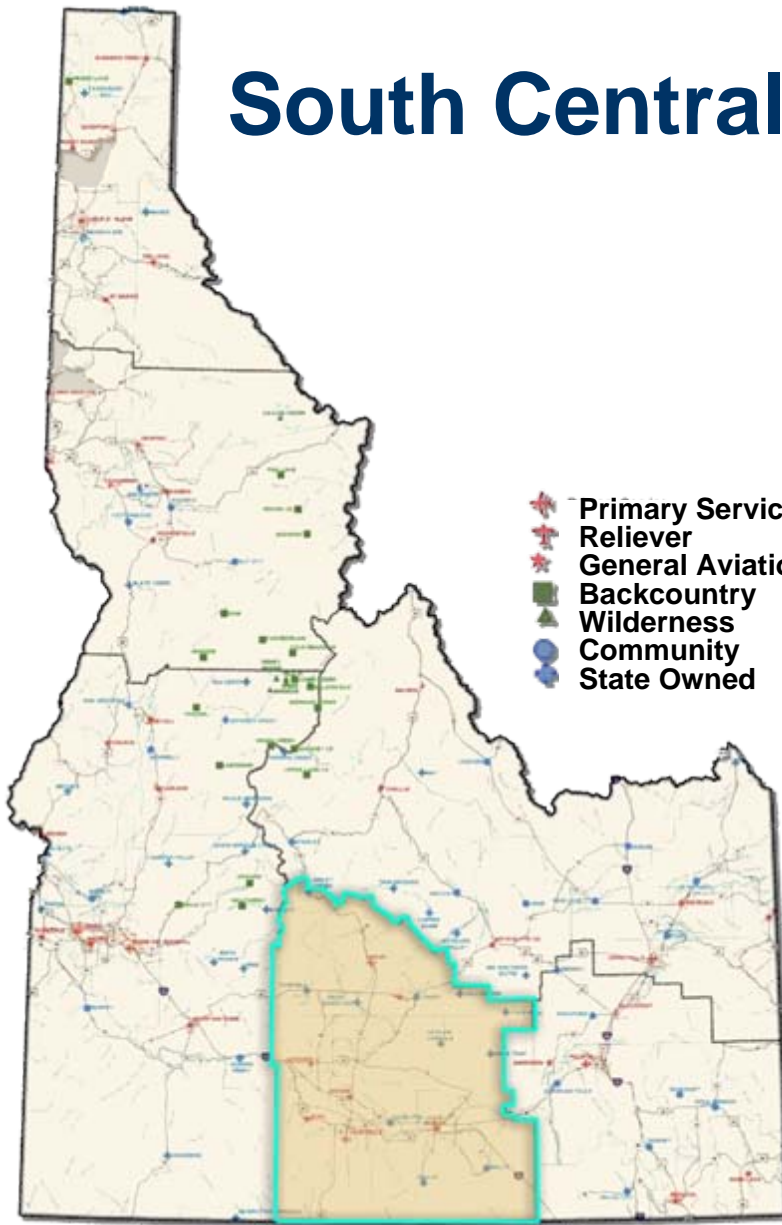
# Idaho Airport Sponsorship

## First Steps for a Regional Airport (cont'd)

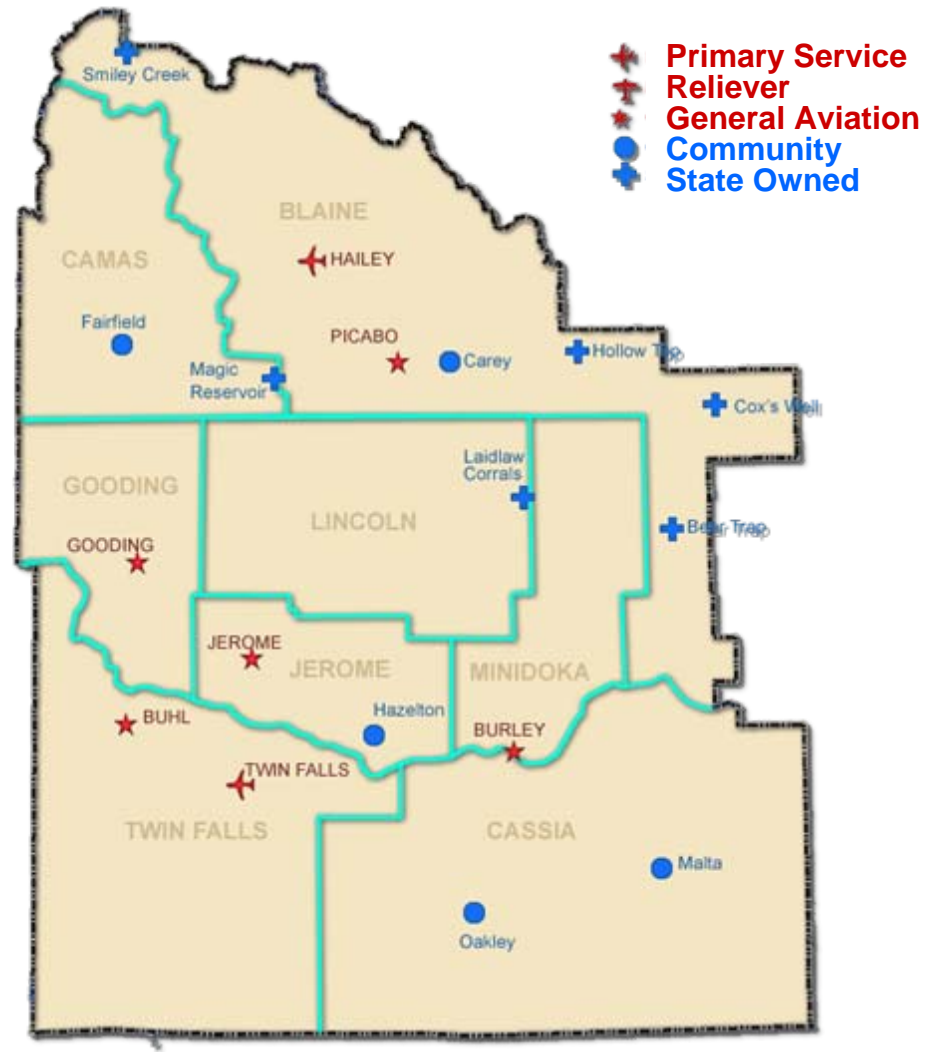
Prior to establishing a Regional Authority:

- An airport site selection study must be completed.
- A proposed site for a regional airport must be selected.
- The level of financial participation expected of each county in the region shall be established.

# South Central Air Service Region



- Primary Service
- Reliever
- General Aviation
- Backcountry Wilderness
- Community
- State Owned



- Primary Service
- Reliever
- General Aviation
- Community
- State Owned



# Idaho Airport Sponsorship

## First Steps for a Joint Airport Authority

- A less structured approach to establishing an initial group of interested parties
- County Commissions, City Councils, and Highway District Commissions have the authority to create a joint airport
- Petitions and multiple elections are not mandated as a step in the creation of a joint airport Authority



# Idaho Airport Sponsorship

## Effect on Existing Commercial Airport

- require forfeiture of current Part 139 certification;
- possible funding impacts;
- loss of commercial airport entitlement funding;
- require closure of TWF or conversion of airport to only serve general aviation activity;
- require financial commitment and funding contribution to the new airport.