

# Part 150 Presentation

## Highline Forum

June 29, 2011

# Seattle-Tacoma International Airport

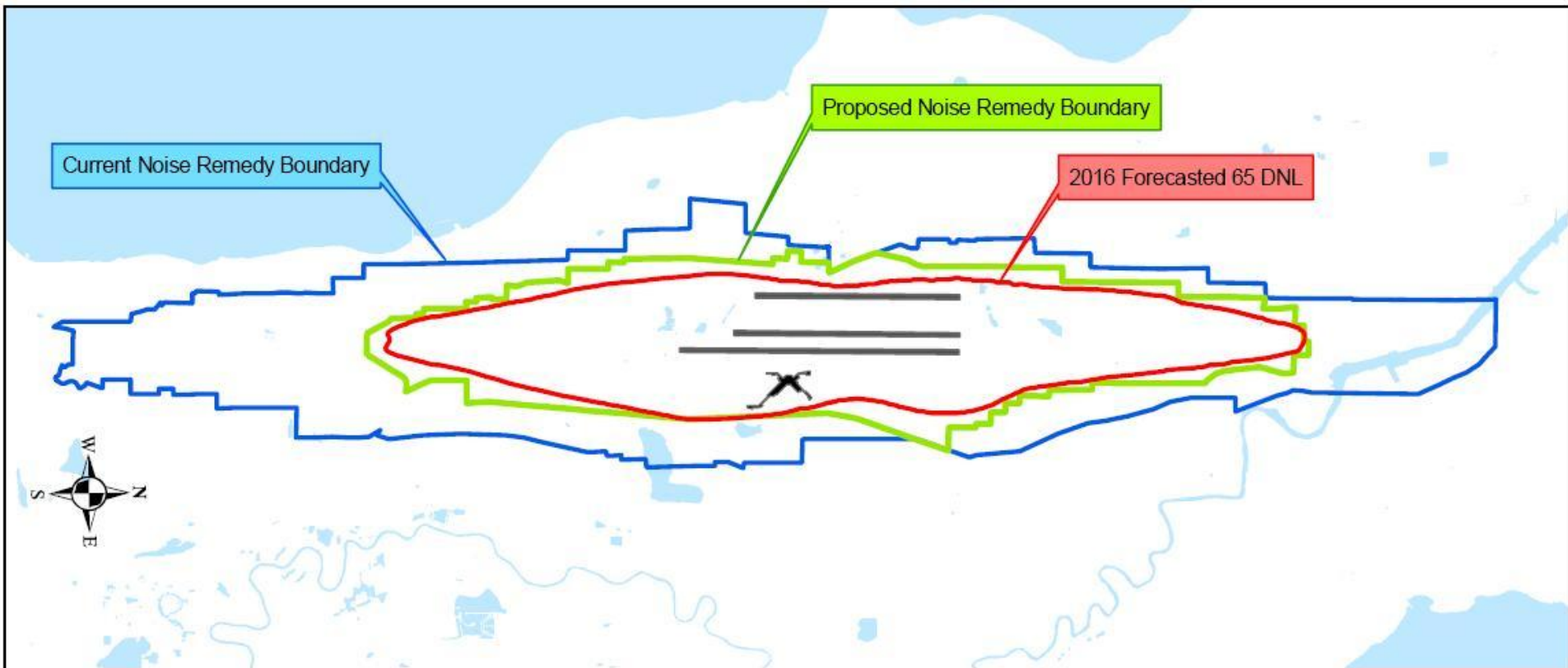
## Agenda

- ❑ **Status of Current Noise Abatement Measures**
- ❑ **New Potential Noise Abatement Measures**
- ❑ **Status of Current Land Use Measures**
- ❑ **New Potential Land Use Measures**
- ❑ **New Potential Program Management Measures**



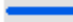
## Smaller noise contours = smaller program boundaries

- FAA funding eligibility requires periodic updating of contours & program boundary
- Existing boundary based on contours reflective of more and louder aircraft than existing & projected fleet
- Proposed program boundary based on projected 5 year forecasted contour
- Sound insulation offers made to all eligible single-family homes within existing program boundary

# Updated Noise Program Boundary Based on Forecasted 2016 Contour



## Legend

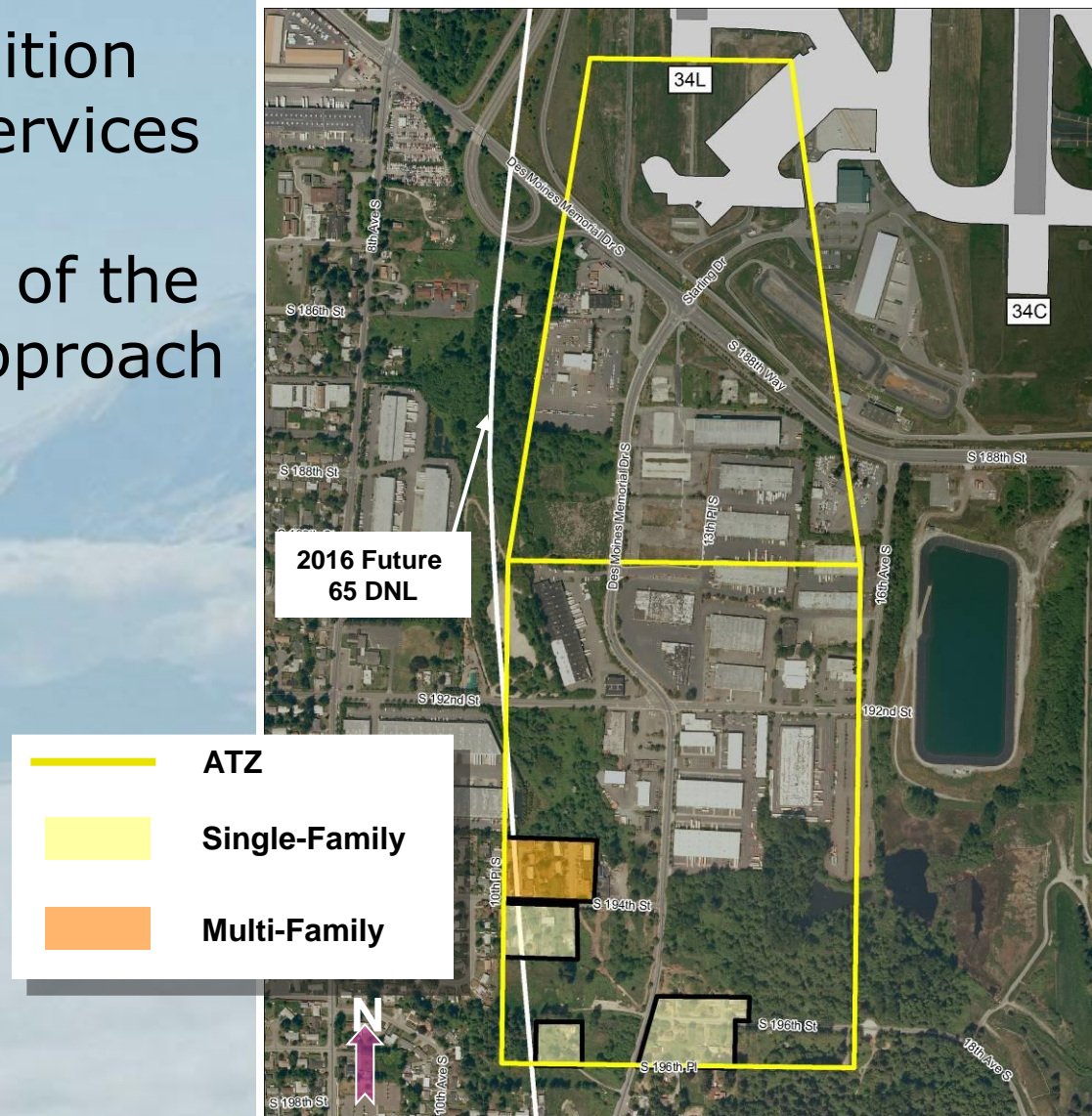
-  2016 forecasted 65 DNL
-  DRAFT Proposed Remedy Boundary
-  Noise Remedy Boundary

# Options Under Review

- **Residential sound Insulation within new boundary**
  - Single-family homes,
  - Condominiums
  - Pilot project for apartment buildings
  - Air conditioning in new insulation work
- **Avigation Easements for individual mobile homes on private land**
- **Church sound insulation feasibility study**
- **Partner with local jurisdictions on long-term, land use and noise compatibility planning**

# South Approach Transition Zone

- Voluntary acquisition and relocation services for residential properties south of the third runway (Approach Transition Zone)



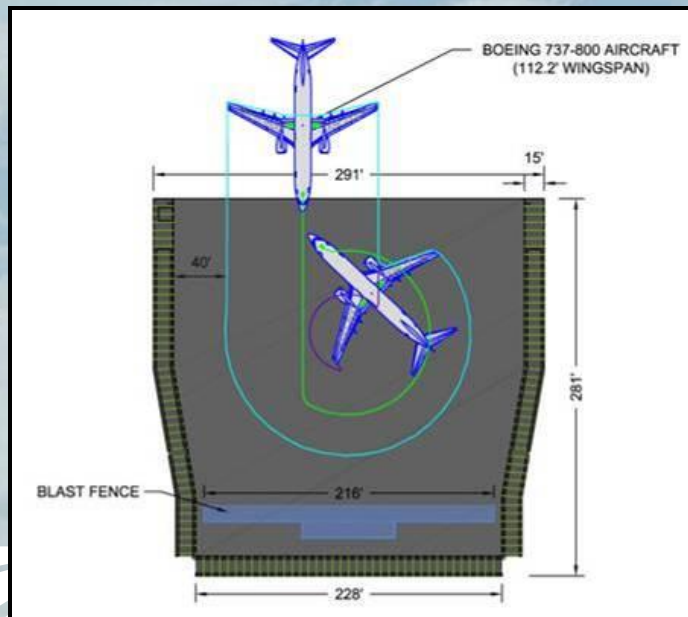
# Hush House

- A Hush House is a term used for an enclosed, noise suppressed, aircraft engine test facility
- Typically consists of 3 walls that deflect jet blast
- Hush House will typically reduce noise by 15-20 dB
- Typical Hush Houses cost \$3 - \$6 million (structure only)
- Site factors determine exact costs



# Hush House Evaluation

- Fixed orientation with the wind
- SEA-TAC facility would need to open to the south so that aircraft would face the south during run up
- Popular design (Portland, Chicago, Indianapolis...)



# Hush House Evaluation



# Options Under Review

- **Noise Monitoring System**
  - Evaluating the need to add terminals
  - Evaluating new reporting techniques
- **Fly Quiet Program**
  - Identifying possible enhancements
  - Expanding the program to include ATCT reporting of operational modes for comparison to runway use goals
- **Updating the Noise Exposure Maps as necessary**

# Questions/Answers