

# CLT Noise Exposure Map Update **Public Information Meeting**

February 5, 2015



# Noise Exposure Map (NEM) Update

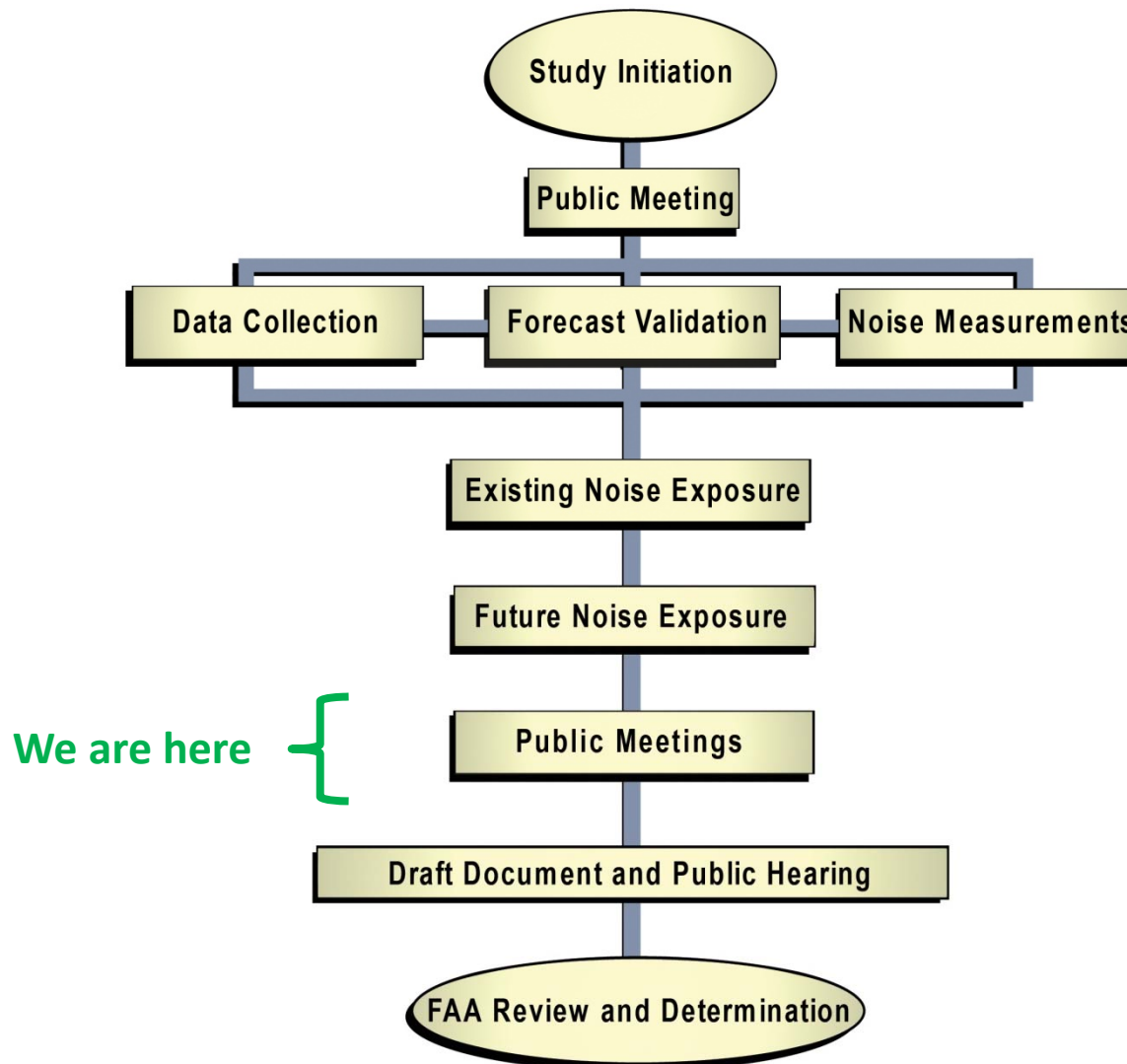
---



## Welcome and Introductions

- Charlotte Douglas International Airport
  - Sponsor of the Noise Exposure Map (NEM) Update
  - Certify the NEMs are accurate
  - NEM Team: Jack Christine, Katherine Dennis, Lauren Scott, Kevin Hennessey
- Consultant Team
  - Landrum & Brown is the lead consultant for the NEM Update
  - 60 years of aviation planning
  - Experts in aircraft noise and land use planning
  - Rob Adams, Principal-in-Charge
- Federal Aviation Administration
  - Developed guidelines for NEMs that must be followed
  - Review NEMs for accuracy and determination that guidelines were met
  - Provide technical support for noise modeling

## NEM Update Process



## NEM Update General Overview

- NEM Updates Document Noise Levels
  - The focus of the NEM Update is to quantify noise and identify land use incompatibilities that exist today and in the future
- NEM Updates must Follow FAA Guidelines
- NEM Updates do not:
  - Recommend changes to airport or runway, or implementing mandatory restrictions on aircraft
  - Recommend levying fines for not following procedures
  - Limit access to the airport based on size, type, or noise created by aircraft
  - Alter the noise compatibility measures already in place at the airport

# Noise Exposure Map (NEM) Update

---



## Previous NEMs at CLT

- 1990 - Part 150 Noise Compatibility Study
- 1996 - Part 150 Study Update
  - Prepared NEMs for 1996 and 2001 conditions
  - 2001 NEM included construction of the third parallel runway

## Important Facts About NEM Updates

- Developing Noise Exposure Maps
  - FAA has established land use compatibility guidelines for identifying aircraft noise impacts
  - Based on Day-Night Average Sound Level (DNL)
  - Required to use Integrated Noise Model (INM)
  - Noise-sensitive uses are considered non-compatible at or above 65 DNL
    - Residential
    - Schools
    - Places of worship
    - Hospitals
    - Nursing homes
    - Daycare facilities where licensed education occurs
    - Libraries

# Noise Exposure Map (NEM) Update

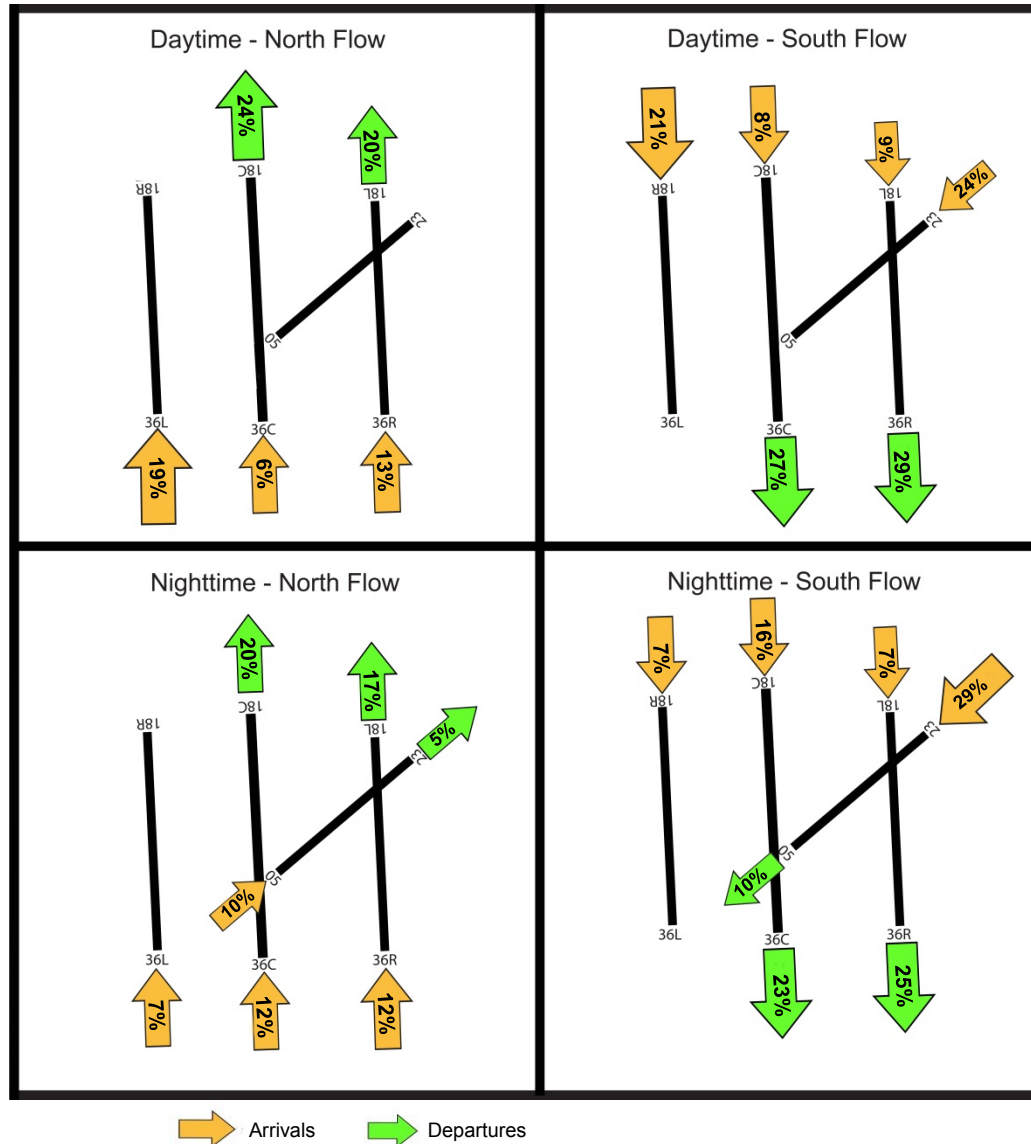


## Operating Levels and Fleet Mix

Aircraft Type	INM ID	2015 Average-Annual Daily Operations	2020 Average-Annual Daily Operations	Aircraft Type	INM ID	2015 Average-Annual Daily Operations	2020 Average-Annual Daily Operations
<b>Heavy Passenger Jets</b>				<b>Regional / Business Jets</b>			
Boeing 767-300	767300	0.1	3.0	Business Jet	CIT3	0.6	0.9
Airbus A330-300	A330-301	6.0	7.5	Business Jet	CL600	3.9	5.7
Airbus A330-300	A330-343	5.7	7.4	Business Jet	CL601	2.6	3.9
Airbus A340-200	A340-211	0.2	0.3	Canadair Regional Jet CRJ-200	CLREGJ	258.6	263.5
Airbus A340-600	A340-642	0.9	1.2	Business Jet	CNA500	2.3	3.4
Airbus A350	7773ER	0.0	6.2	Business Jet	CNA510	1.3	1.8
<i>Subtotal</i>		12.9	25.6	Business Jet	CNA55B	1.6	2.4
<b>Heavy / Large Cargo Jets</b>				Business Jet	CNA750	1.3	1.9
Boeing 727-200 (hushkitted)	727EM2	0.9	<0.1	Dornier 328 Jet	D328J	0.0	1.1
Boeing 767-200	767CF6	8.8	3.7	Embraer EMB-140	EMB140	1.0	21.9
Airbus A300-600	A300-622R	5.3	5.2	Embraer EMB-145	EMB145	57.2	41.8
Airbus A310-300	A310-304	0.1	<0.1	Embraer EMB-145	EMB14L	21.6	<0.1
Douglas DC10-10	DC1010	0.5	<0.1	Business Jet	FAL20	3.9	5.7
Douglas DC10-30	DC1030	<0.1	<0.1	Business Jet	GIV	4.0	6.0
<i>Subtotal</i>		15.5	8.8	Business Jet	GV	2.6	3.9
<b>Large Passenger Jets</b>				Business Jet	LEAR35	13.0	20.0
Boeing 717-200	717200	1.5	3.4	Business Jet	MU3001	12.0	16.9
Boeing 737-300	737300	1.7	0.6	<i>Subtotal</i>		387.8	400.9
Boeing 737-400	737400	76.2	<0.1	<b>Propeller Aircraft</b>			
Boeing 737-700	737700	9.1	10.6	Twin-Engine Piston	BEC58P	4.8	4.7
Boeing 737-800	737800	1.1	10.5	Single-Engine Piston	CNA172	0.4	0.3
Boeing 737-900	737900	0.2	0.2	Single-Engine Piston	CNA206	0.5	0.3
Boeing 757-200	757PW	0.3	12.6	Single-Engine Piston	CNA208	1.9	0.9
Boeing 757-200	757RR	18.4	8.3	Single-Engine Piston	CNA210	0.8	1.3
Boeing 757-300	757300	0.0	0.1	Twin-Engine Turboprop	CNA441	2.7	2.6
Airbus A319-100	A319-131	171.7	207.1	DASH 6	DHC6	4.2	4.1
Airbus A320-200	A320-211	21.6	27.6	DASH 8-100	DHC8	40.5	42.0
Airbus A320-200	A320-232	64.8	82.7	DASH 8-300/400	DHC830	77.8	85.2
Airbus A321-200	A321-232	189.2	348.2	Single-Engine Piston	GASEPF	6.6	4.1
Canadair CRJ701	CRJ701	129.5	169.8	Single-Engine Piston	GASEPV	4.6	2.9
Canadair CRJ900	CRJ9-ER	165.3	276.5	Twin-Engine Piston	PA31	1.1	0.6
Douglas DC9-30 (hushkitted)	DC93LW	0.1	<0.1	<i>Subtotal</i>		145.9	149.0
Douglas DC9-50 (hushkitted)	DC95HW	1.4	0.8	<b>Military Aircraft</b>			
Embraer EMB-170	EMB170	9.8	6.1	Lockheed C130 Hercules	C130HP	2.5	3.8
Embraer EMB-175	EMB175	50.8	92.3	<i>Subtotal</i>		2.5	3.8
Embraer EMB-190	EMB190	10.3	11.9	<b>Helicopters</b>			
McDonnell-Douglas MD82	MD82	7.4	<0.1	Augusta A-109	A109	1.7	1.7
McDonnell-Douglas MD83	MD83	2.3	0.4	Bell 407 Jet Ranger	B407	0.3	0.3
McDonnell-Douglas MD88	MD88	11.0	4.4	<i>Subtotal</i>		2.0	2.0
McDonnell-Douglas MD90	MD9025	7.1	15.4	<b>Grand Total</b>		<b>1,517.4</b>	<b>1,879.5</b>
<i>Subtotal</i>		950.7	1,289.3				

# Noise Exposure Map (NEM) Update

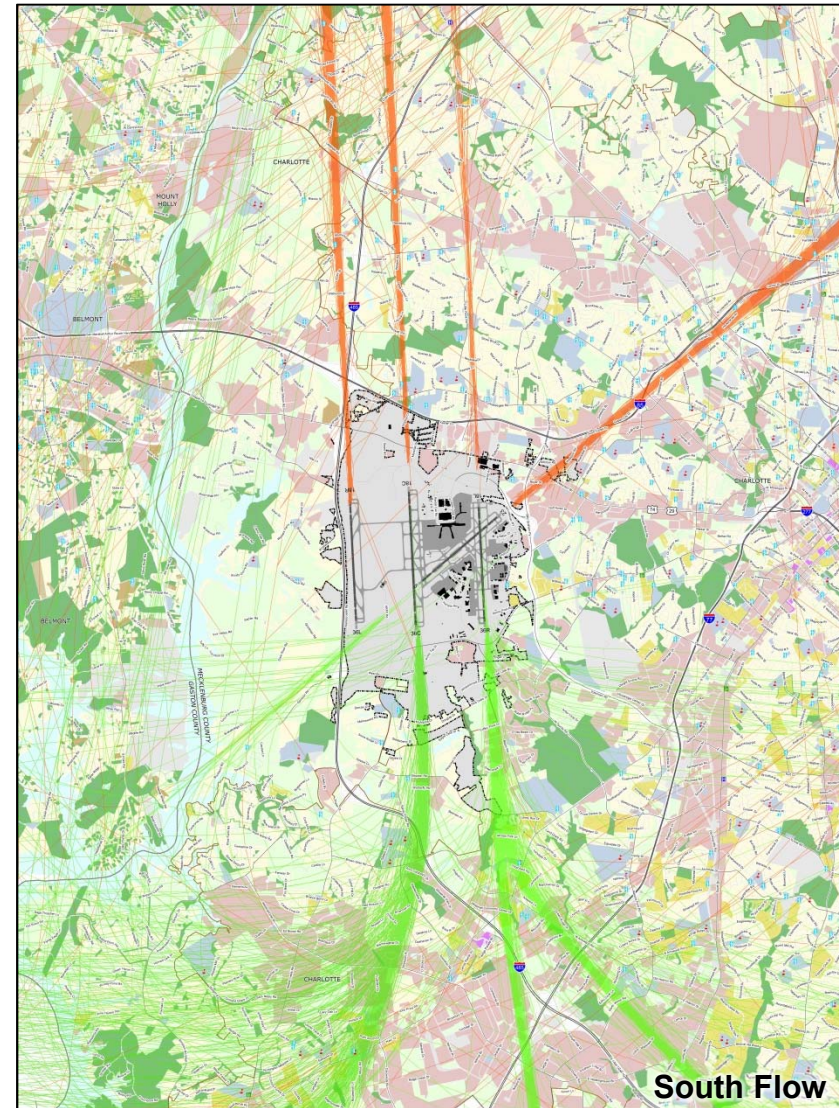
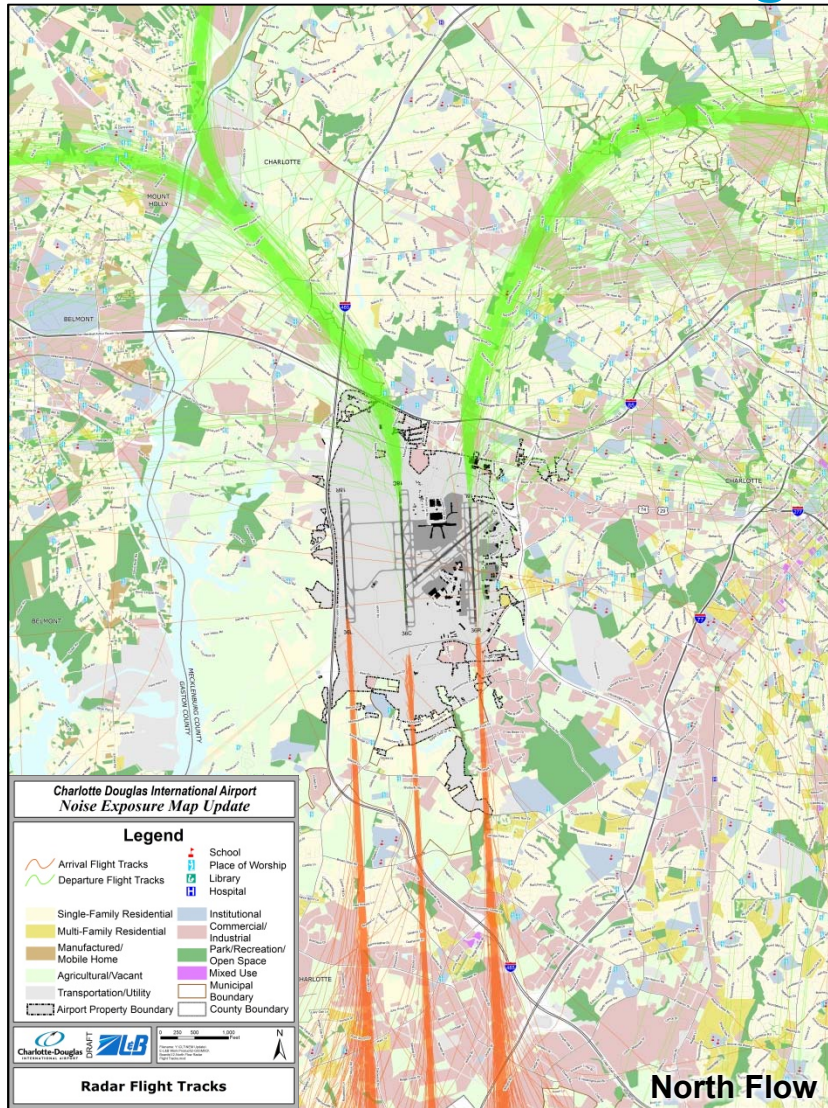
## Existing Runway Use Patterns





# Noise Exposure Map (NEM) Update

## Flight Tracks



# Noise Exposure Map (NEM) Update

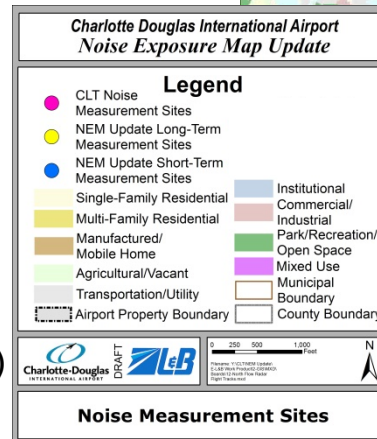
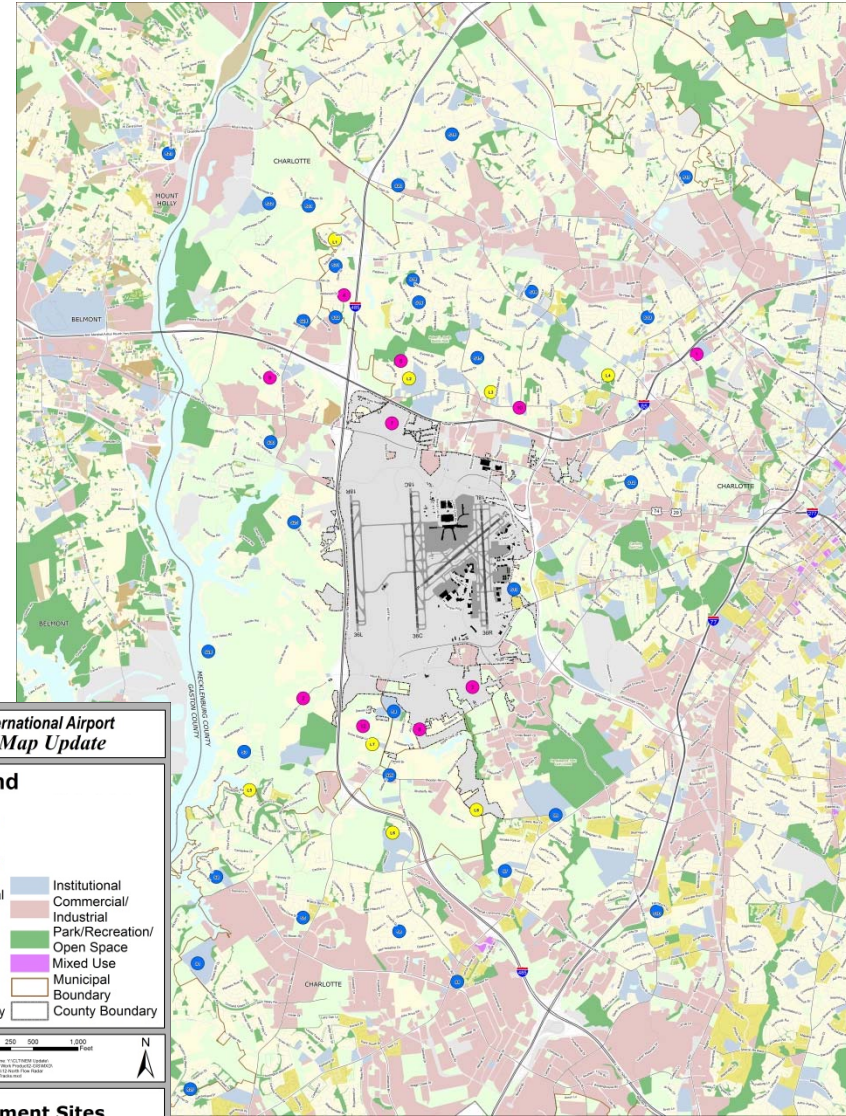
## Noise Monitoring Program

- Collected Data from 10 Existing Sites

1. 601 Dewolfe Street
2. 10300 Garrison Road
3. Whippoorwill Drive
4. 1924 Wildwood Drive
6. 2900 Westerwood Drive
7. Moores Lake
8. McAlpine Drive
9. 3515 Farhill Drive
10. 6101 Tuckaseegee Road
12. 9401 Markswood Road

- Conducted Monitoring from other sites

- 8 Long-Term Sites (5 days)
- 33 Short-Term Sites (~ 1 hour)

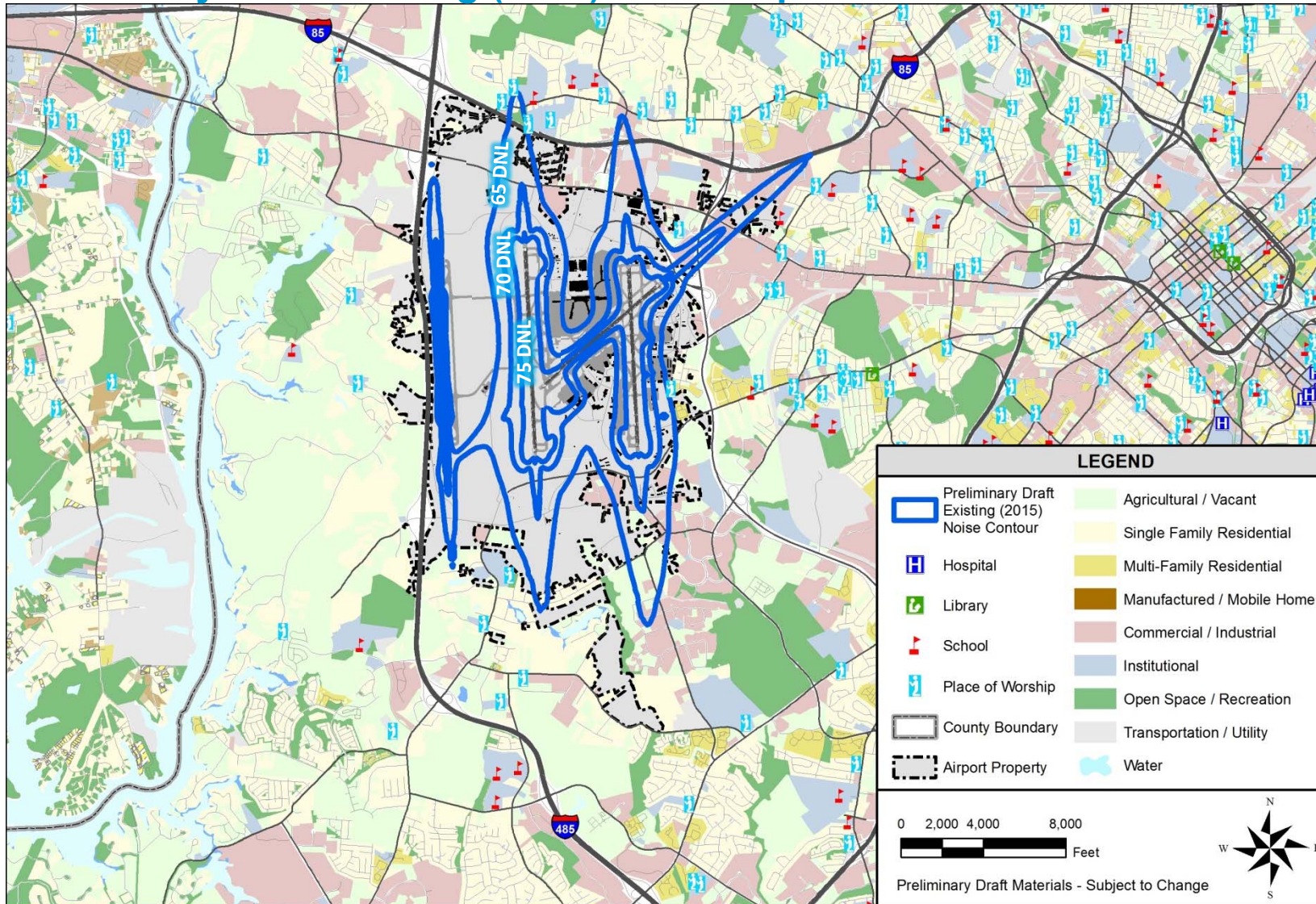


## Noise Monitoring Results

- The monitoring was conducted from July 31, 2014 through August 13, 2014
- Long-term noise monitoring was conducted at 8 sites for over five days at each site
  - DNL noise levels ranged from 59.1 to 64.9 DNL and were consistent with INM predictions
- Short-term noise monitoring was conducted at 33 sites for approximately one hour per site

# Noise Exposure Map (NEM) Update

## Preliminary Draft Existing (2015) Noise Exposure Contour



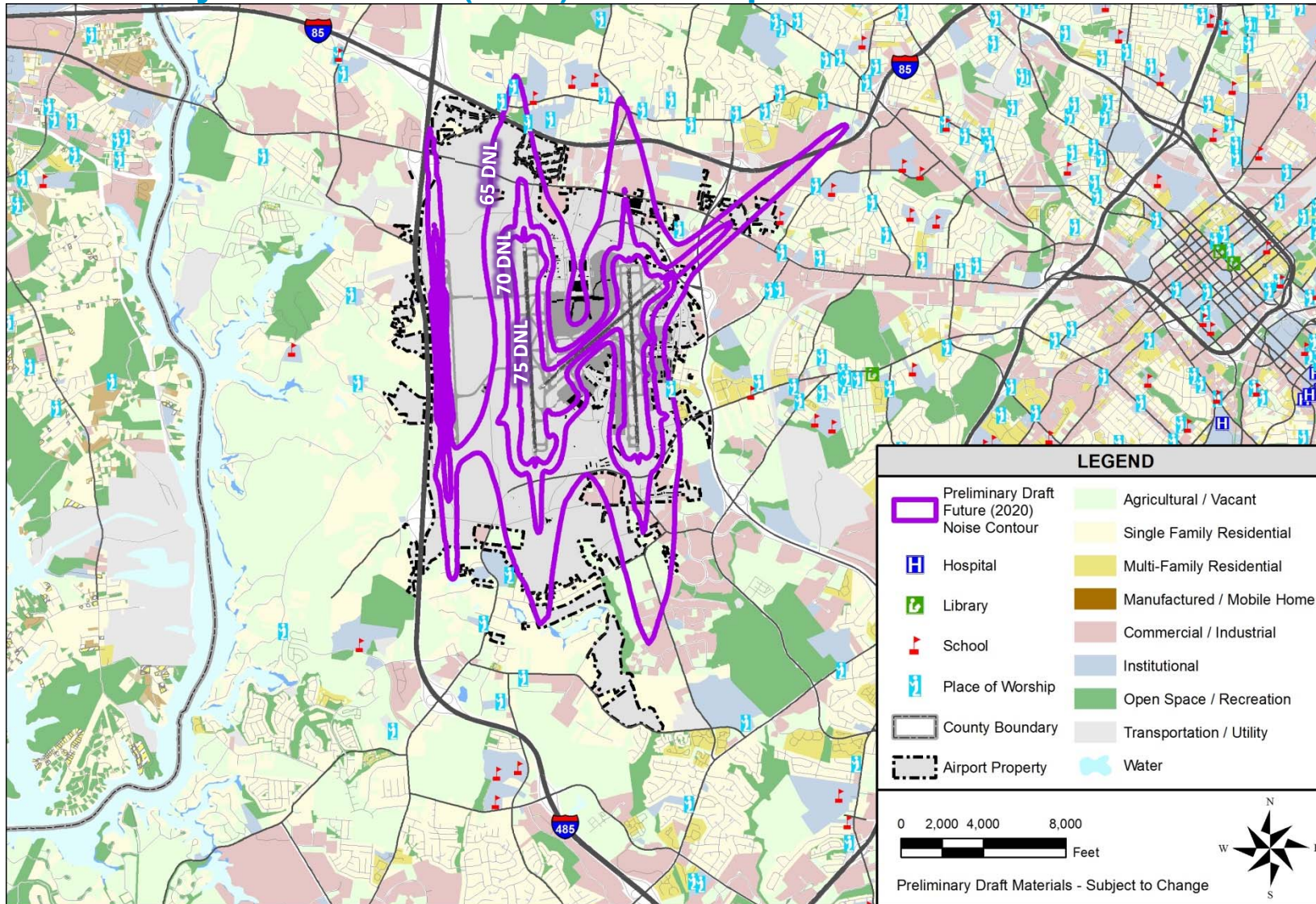
# Noise Exposure Map (NEM) Update

## Preliminary Draft Noise Contour / Land Use Incompatibilities Existing (2015) Noise Exposure Contour

Properties by Mitigation Area	65+ DNL
<b>Housing Units</b>	
Unmitigated	0
Previously Eligible for Sound Insulation	41
Sound Insulated	3
<b>Total Housing Units</b>	<b>44</b>
<b>Population</b>	
<b>Total Population</b>	<b>113</b>
<b>Noise-Sensitive Facilities</b>	
Schools	0
Churches	0
Libraries	0
Hospitals	0
Nursing Homes	0
<b>Total Noise-Sensitive Facilities</b>	<b>0</b>

# Noise Exposure Map (NEM) Update

## Preliminary Draft Future (2020) Noise Exposure Contour



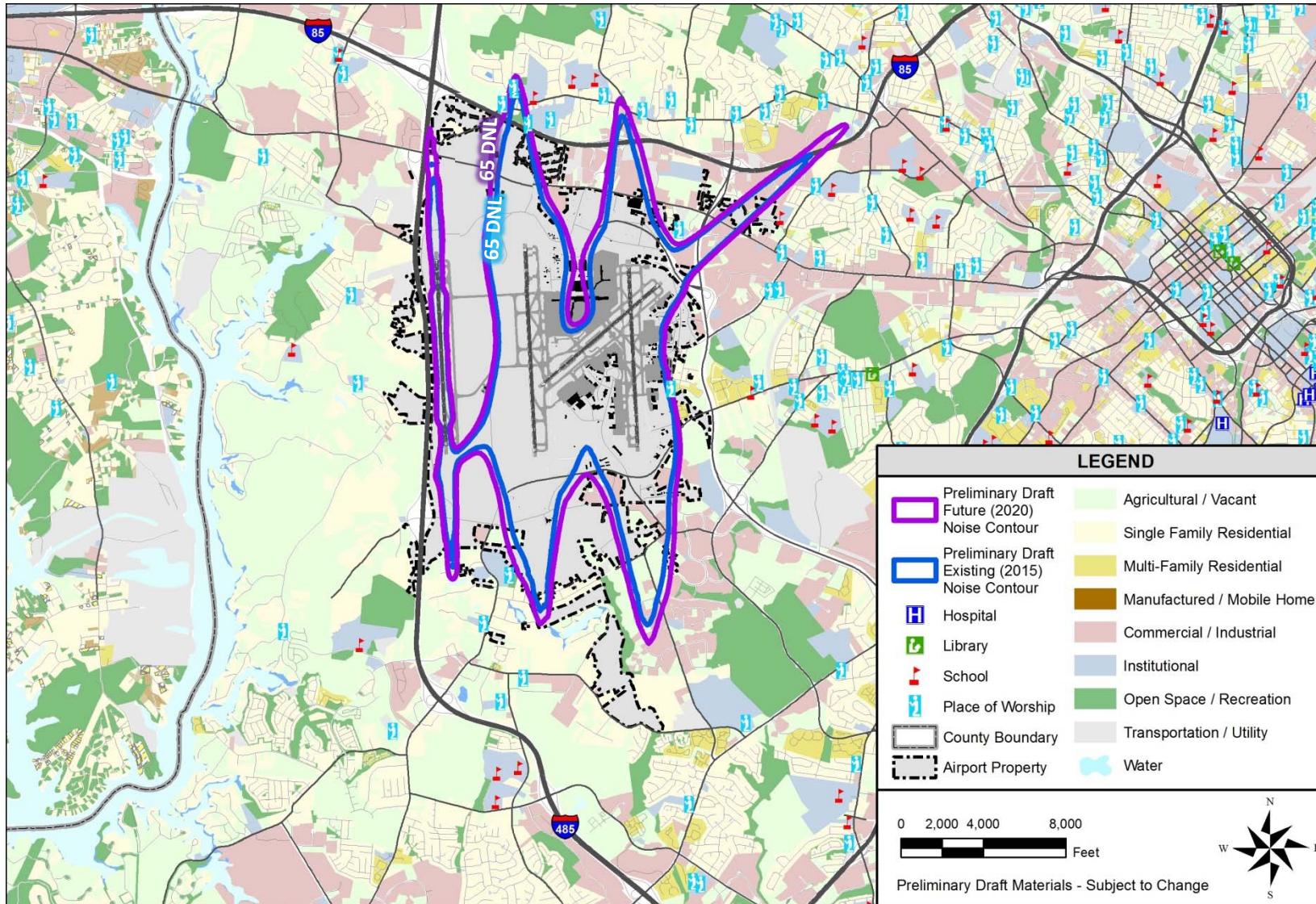
# Noise Exposure Map (NEM) Update

## Preliminary Draft Noise Contour / Land Use Incompatibilities Future (2020) Noise Exposure Contour

Properties by Mitigation Area	65+ DNL
<b>Housing Units</b>	
Unmitigated	3
Previously Eligible for Sound Insulation	53
Sound Insulated	5
<b>Total Housing Units</b>	<b>61</b>
<b>Population</b>	
<b>Total Population</b>	<b>160</b>
<b>Noise-Sensitive Facilities</b>	
Schools	0
Churches	2
Libraries	0
Hospitals	0
Nursing Homes	0
<b>Total Noise-Sensitive Facilities</b>	<b>2</b>

# Noise Exposure Map (NEM) Update

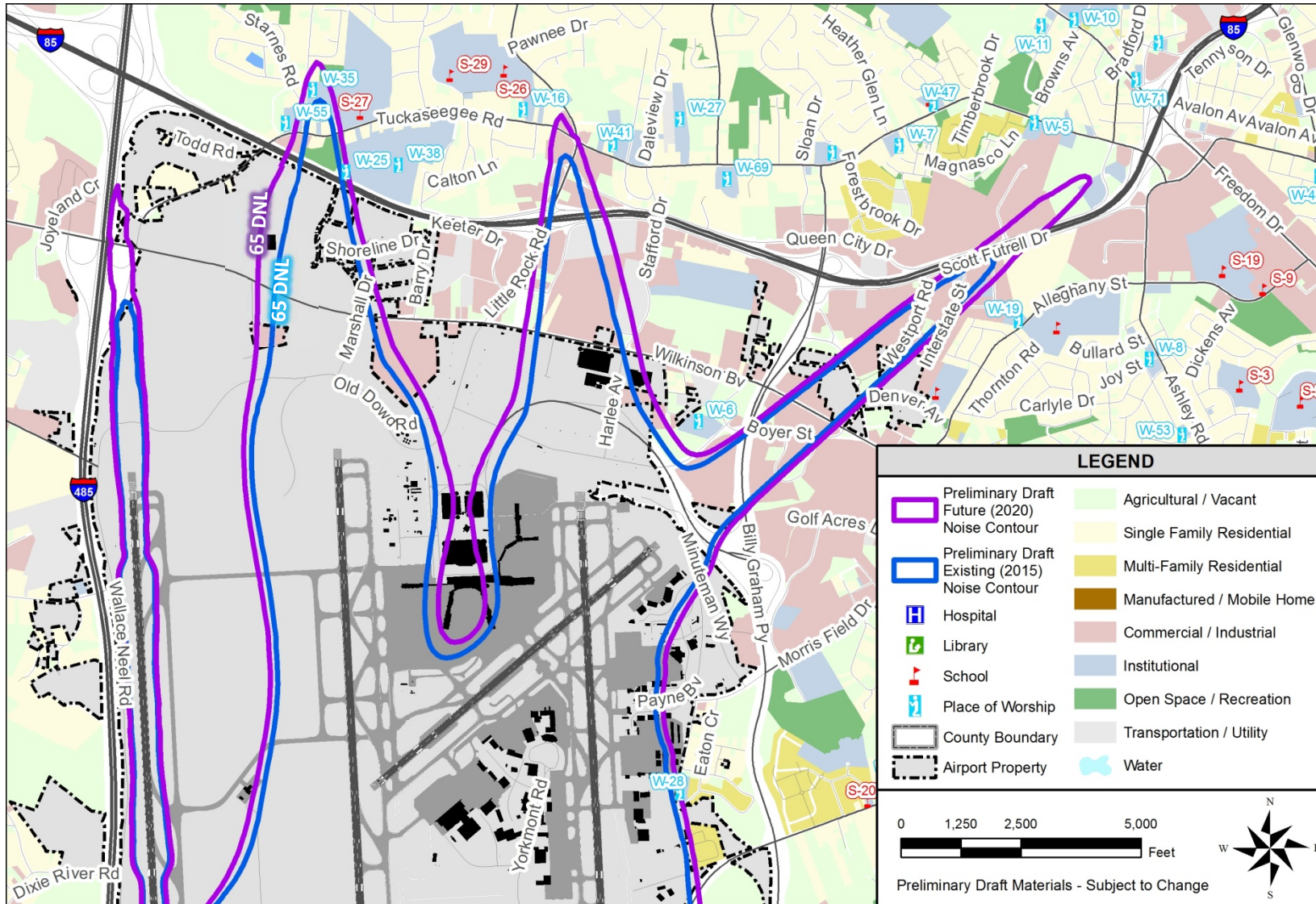
## Preliminary Draft Existing (2015) Compared to Future (2020) Noise Exposure Contours





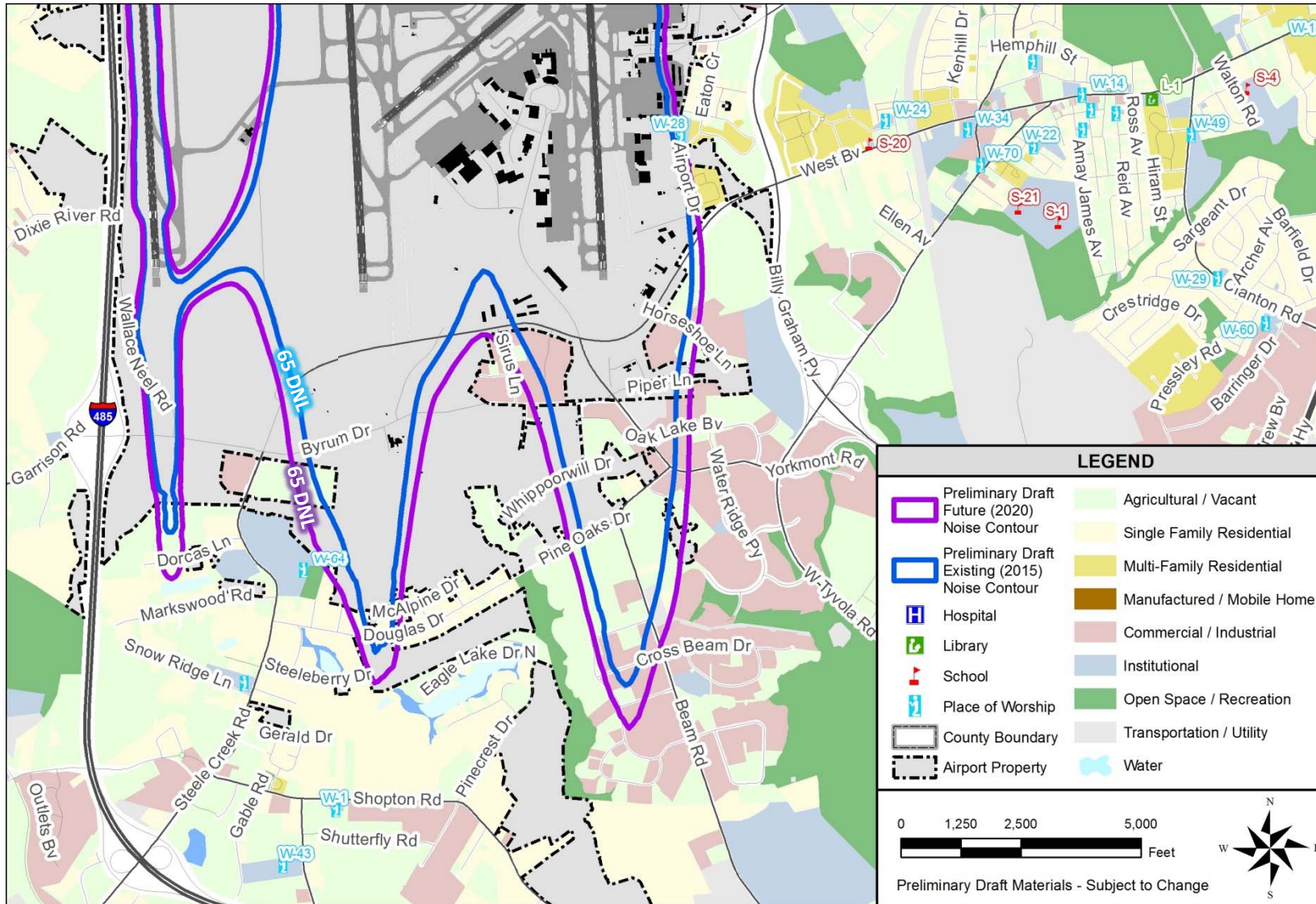
# Noise Exposure Map (NEM) Update

## Preliminary Draft Existing (2015) Compared to Future (2020) Noise Exposure Contours



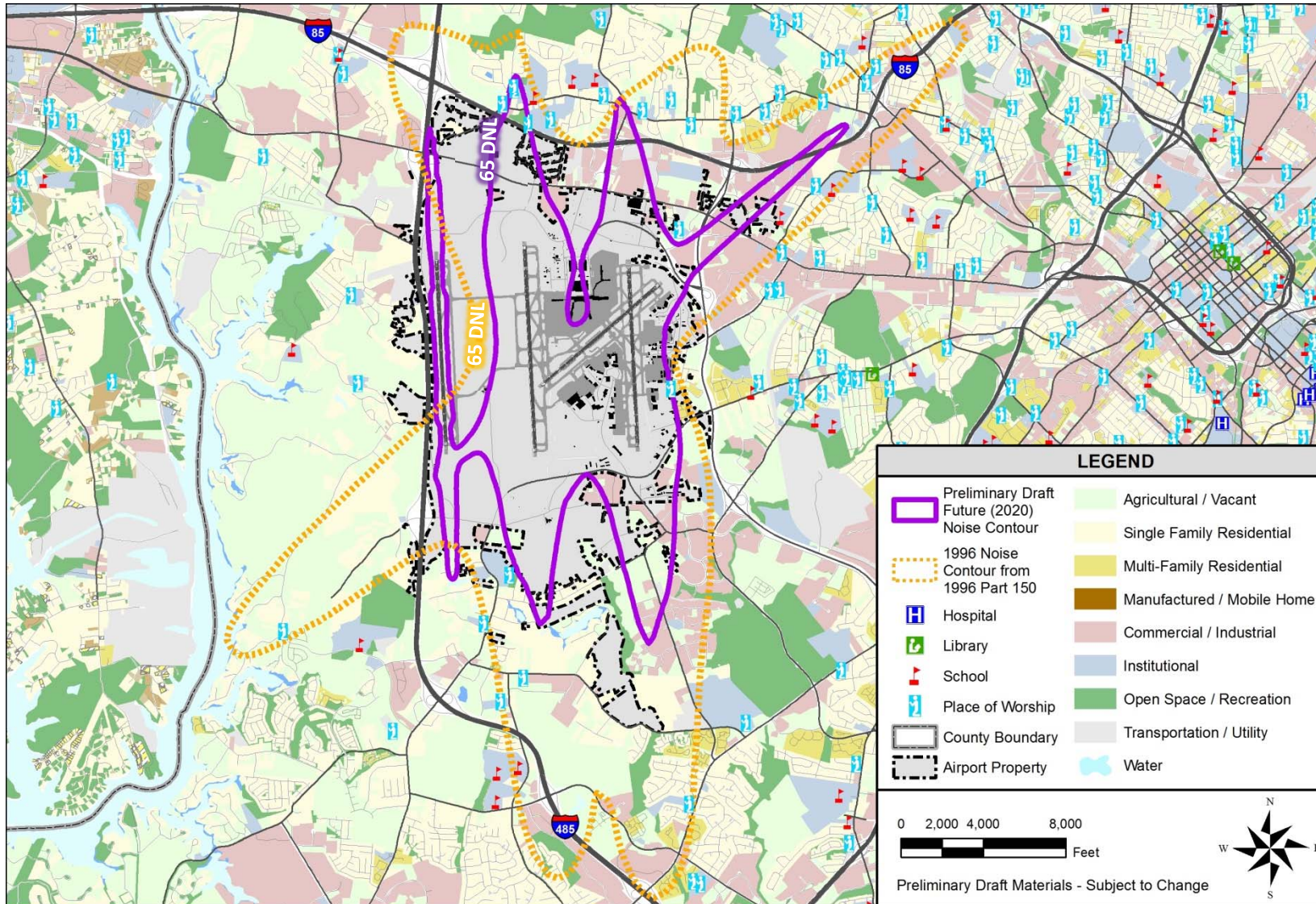
# Noise Exposure Map (NEM) Update

## Preliminary Draft Existing (2015) Compared to Future (2020) Noise Exposure Contours



# Noise Exposure Map (NEM) Update

## Preliminary Draft Future (2020) Noise Exposure Contours compared to 1996 Noise Contour



# Noise Exposure Map (NEM) Update

## Preliminary Draft Noise Contour / Land Use Incompatibilities

Properties by Mitigation Area	1996 Noise contour	2015 Noise Contour	2020 Noise Contour
	65+ DNL		
<b>Housing Units</b>			
Unmitigated	n/a	0	3
Previously Eligible for Sound Insulation	n/a	41	53
Sound Insulated	n/a	3	5
<b>Total Housing Units</b>	<b>2,773</b>	<b>44</b>	<b>61</b>
<b>Population</b>			
<b>Total Population</b>	<b>6,700</b>	<b>113</b>	<b>160</b>
<b>Noise-Sensitive Facilities</b>			
Schools	4	0	0
Churches	15	0	2
Libraries	0	0	0
Hospitals	0	0	0
Nursing Homes	0	0	0
<b>Total Noise-Sensitive Facilities</b>	<b>19</b>	<b>0</b>	<b>2</b>

## Next Meetings

- Next Public Information Meetings
  - Planned for Spring 2015